

Neighborhood Support Network

April 26, 2011 - Agenda

- Introductions
- Meeting Purpose & Limitations
- Update on Imagine Greater Tucson
 - Phase I Results
 - Phase II Purpose, Events and Expectations
- Land Use, Growth, Housing & Density
- Open Discussion

Imagine Greater Tucson

- Community-Based Effort to Establish a Vision and Subsequent Action Plans
- Intended to Guide Choices about our Region's Future
- Values + Trends → Scenarios → Vision → Strategies → Action Plans → Tangible Results
- Outgrowth of May 2007 Regional Town Hall
- Started: January 2009 → End: 2013 plus
- Funding: Multiple sources (e.g. PAG, donations)

IGT – Phase I

- Gather Data on Values
 - 51 Community Conversations
 - Over 2,500 Online / Paper Surveys
 - From Saddlebrook to Green Valley
Vail to Marana and all around Tucson
 - September 2010 – February 2011
- Analysis of Data
 - December 2010 – March 2011
- Results – presented April 7, 2011

Comments from Participants

- "I am concerned that Tucson keeps spreading out as people always want to live on the fringes of town."

Comments from Participants

- "Don't bulldoze my desert and put stucco boxes on it"
- "Integrate high density but don't lose community or quality of life for people who already live there."

Comments from Participants

- "We live in a community of car convenience"
- "I want to be able to travel in an efficient, safe, rapid manner to various destinations around town."

Comments from Participants

- "Too many cars and not enough viable transportation options"
- "I don't like being forced to share walls, live close to people. I like my privacy and the feeling of open spaces."
- "As we grow, it's going to take longer to get everywhere."

Comments from Participants

- "Condos above stores is a great idea."
- "Slow sprawl and focus development on the urban core."
- "Smart land use means we can maintain open spaces."

Tucsonans Like:

- The great weather, climate and sunshine
- Friendly, relaxed and small town feel
- Natural Environment
- Diversity
- Community and Neighborhoods
- Mountains
- The University of Arizona

Tucsonans Want to Change:

- Governance and politics
- Accessibility and Transportation
- Policy, planning and regulation
- Functional layout
- Built Environment
- Public transit
- Downtown
- Education

- Nine Categories of Things We Value
 - Business and the Economy
 - Cultural Diversity and Regional Character
 - Governance and Leadership
 - K-12 Education
 - Land Use and Urban Design
 - Natural Resources, Environment and Outdoor Recreation
 - Transportation and Accessibility
 - University of Arizona and Its Role in the Region
 - Well Being and Safety

Business and the Economy

- Growth of well-paid, high quality jobs
- New business development and expansion
- A thriving local, small business environment
- A strong green business sector
- A business friendly environment with sufficiently streamlined regulation
- Well-educated workforce
- A diversified economy that attracts and supports major businesses and sectors
- Expanded tourism

Governance and Leadership

- Effective, efficient, and accountable local governments and other public institutions
- Dynamic, effective, visionary leaders
- Implementation of a common, regional vision
- Collaborative intergovernmental relationships
- A positive relationship between the government and the private sector
- A fair and stable tax rate and structure that adequately pays for necessary services
- The role non-profits and social service providers play in our community
- A reduced influence of special interest groups

K-12 Education

- Quality education and high performing schools in the region
- Sufficient Federal, State and local funding for education and schools
- Hiring, supporting, and retaining high quality teachers
- School curricula that foster and develop skilled and well-rounded citizens and future workers
- Family, community, and governmental support for schools and education
- Administrative effectiveness in local public education

Questions or Comments?

- Phase I
- Value Statements
- Other ?

Imagine Greater Tucson – Phase II

- First, Focus on Land Use and Urban Design, Transportation and the Natural Environment
- Examine Current Trends and Values
- Will Current Trends Lead Us to a Valued Future?
- Create Alternative Scenarios

Current Trends

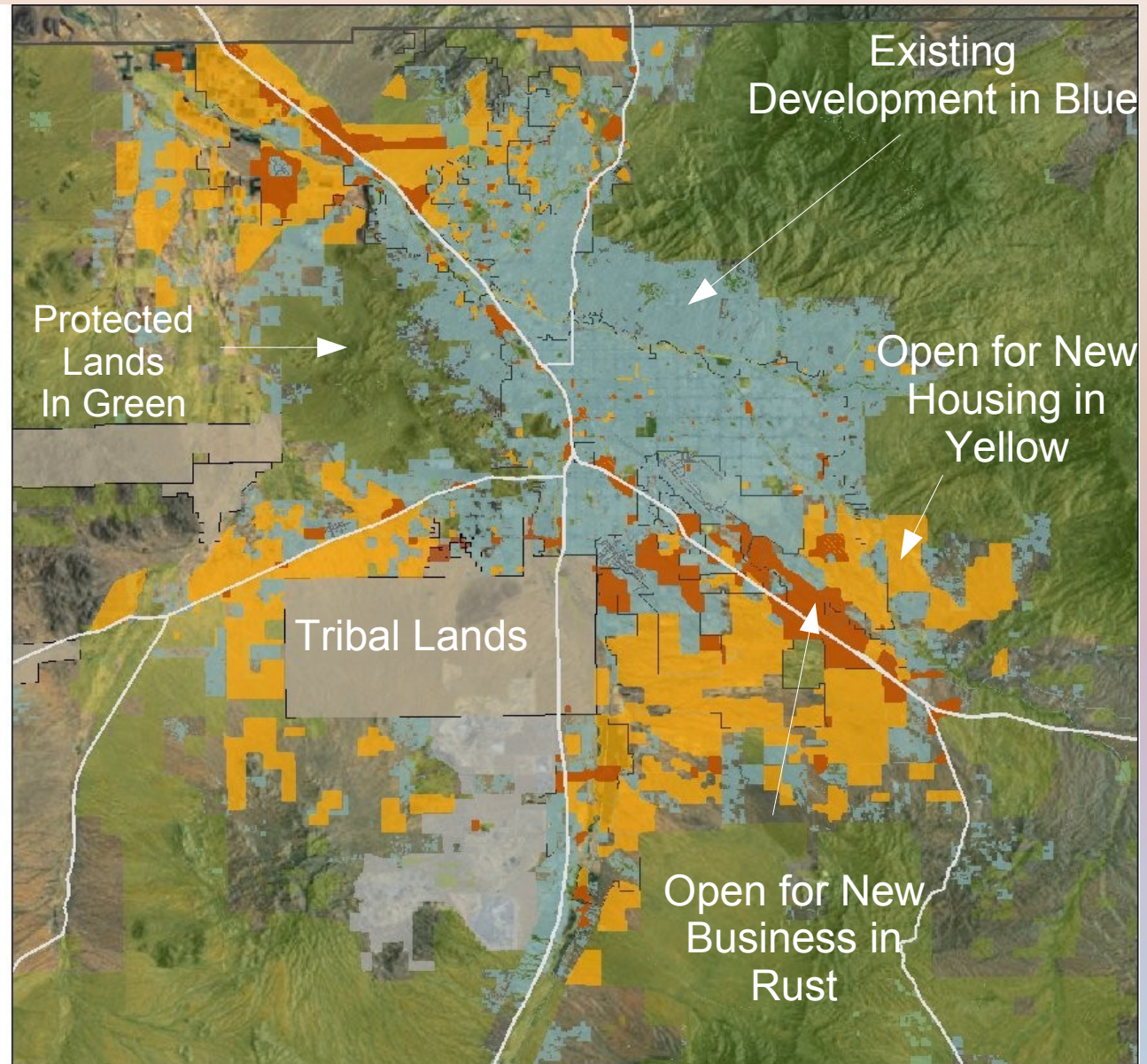
People are still moving into
our region

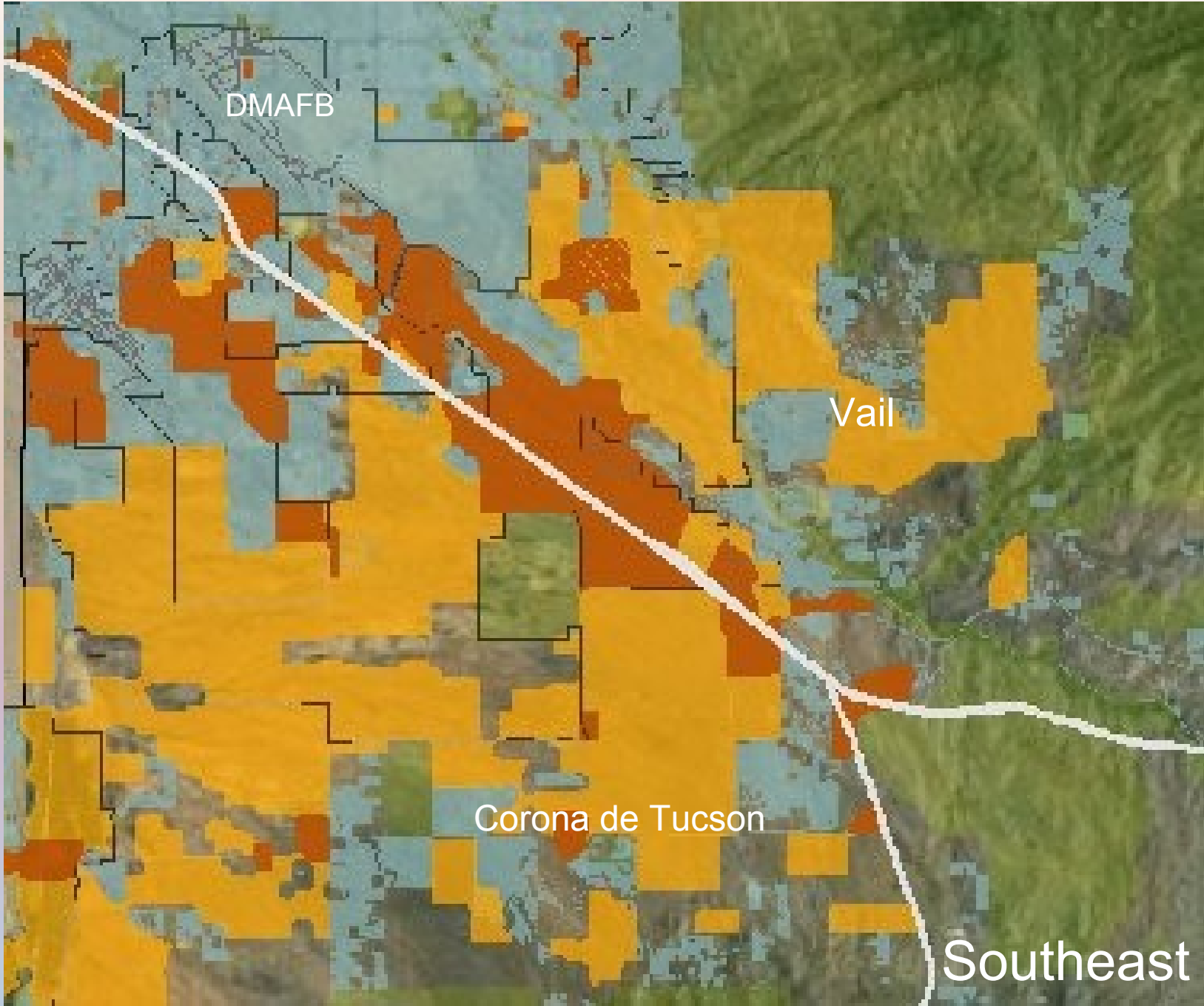
Where will they live and work?

Possible Future Development

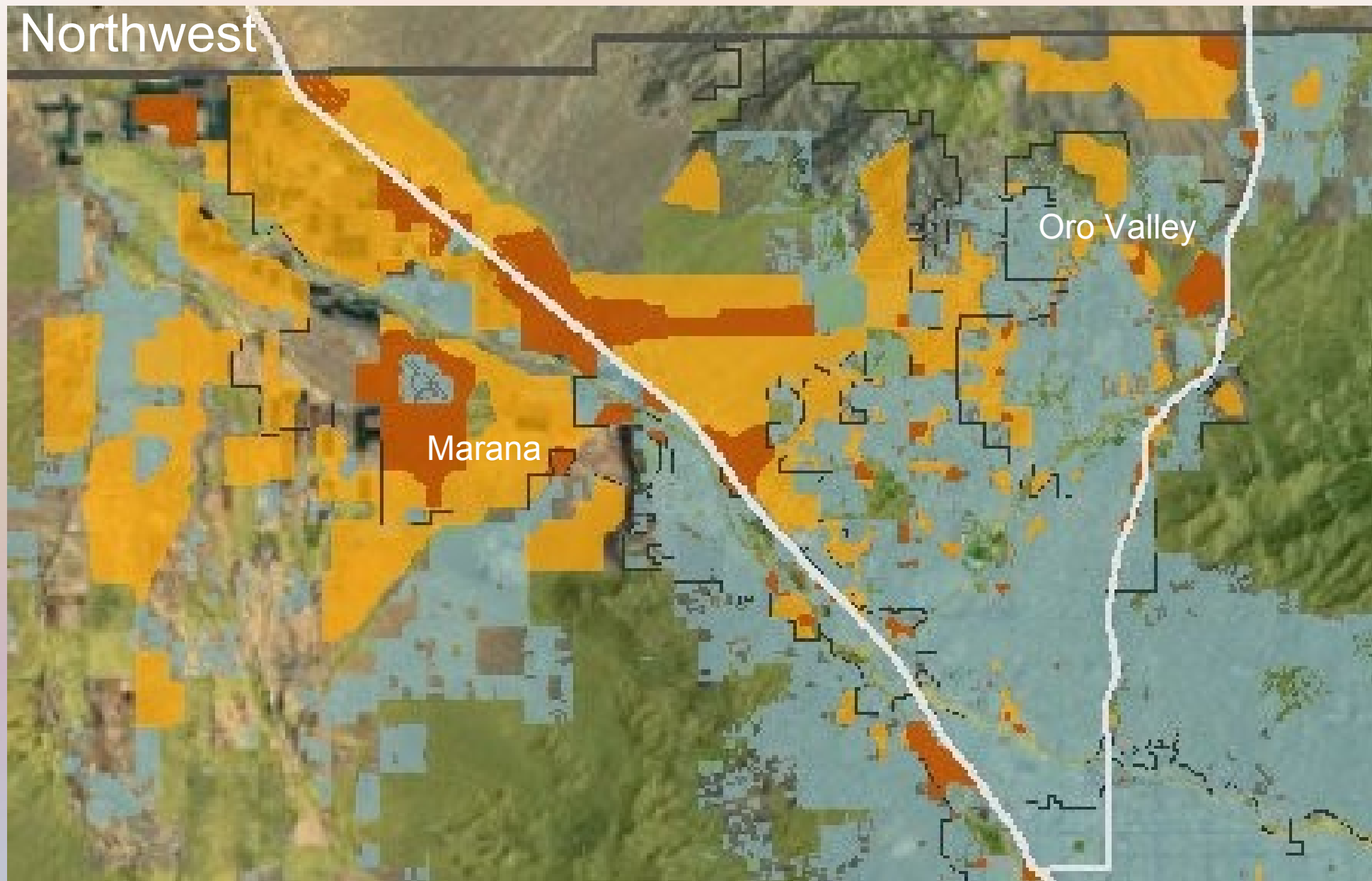
Trends Scenario

-  Housing
-  Jobs
-  Existing Development
-  Pascua Yaqui, Tohono O'odham
-  Preserves, Committed Open Space





Northwest



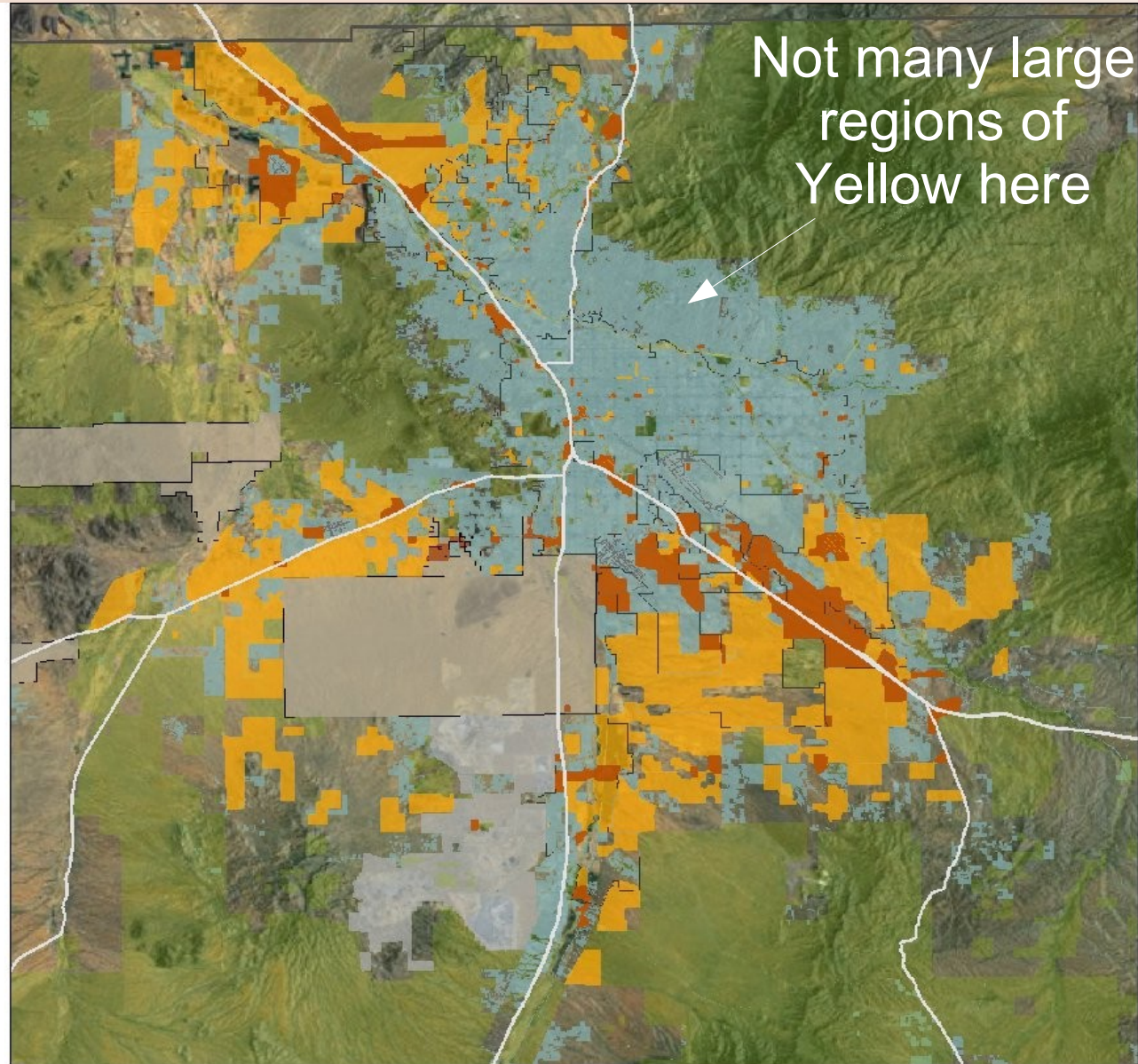
Marana

Oro Valley

Possible Future Development

Trends Scenario

-  Housing
-  Jobs
-  Existing Development
-  Pascua Yaqui, Tohono O'odham
-  Preserves, Committed Open Space



Current Trends

- Private autos will continue to be the near universal mode of travel
- Housing is predominantly single family (90%)
- Employment is in big box and strip commercial, office and industrial parks

Current Trends

- Urban development is encroaching on critical wildlife habitat and corridors
- Region is currently at risk of exceeding EPA standards for ozone levels
- New housing avg 2 units per acre

Current Trends

- Current patterns will require new and widened roads, and extended sewer and water lines
- Growth will likely will not pay its own way
- Densities are too low to support a high quality transit system

Questions or Comments?

- Development Map
- Current Trends
- ??

Things We Value

Land Use and Urban Design - I

- Strong sense of community and a relaxed, small town feel
- Appropriate infill development or redevelopment that is sensitive to protecting existing neighborhoods

Things We Value

Land Use and Urban Design - II

- Reduced sprawl and increased mixed-use, compact development in many key areas
- A vibrant day-night Downtown Tucson that attracts a diverse population

Things We Value

Transportation and Accessibility - I

Ease of cross-town and regional traffic movement

A walkable community

Things We Value

Transportation and Accessibility - II

- A safe and extensive bicycle network for all populations
- Safe and well maintained roads and paths

Questions

- How will we grow in ways that serve community values?
- How do we preserve what we love and create a community where all generations can thrive?

Beginning Answers from IGT Phase II

- Develop Alternative Scenarios of Urban Growth
- Compare Scenarios Against Values
- Choose a Preferred Scenario
- Move to Implement the Scenario by Developing Strategies and Action Plans
- Deliver on Action Plans / Monitor

Phase II Scenario Mapping Workshops

- Wednesday, May 18
 - Tucson Convention Center
- Tuesday, May 24
 - Hilton El Conquistador
- Wednesday, May 25
 - Desert Diamond Center
 - I-19 and Pima Mine Road

- Presentation of Phase II Workshop Details
- By Josh Pope, IGT Co-convener of Tech. Group

Other Land Use / Planning Items

- PAG – Update of Regional Transportation Plan
- Plan Tucson – Update of the City's General Plan
- West University – Old YMCA Site
- West University – Euclid Av. Site
- Student Housing in R1, R2
- Grant Rd. - RTA – Modern Streetcar
- Downtown / UA Student Housing – El Mercado
- Revision of the Land Use Code

Planning for the Future

What should be the role of neighborhoods in planning for the future of the region?

Dilemma: Living Close to Other People

- “. . . transit is only cost-effective at densities above 8 or 10 units per acre”
- “Good neighbors keep their noise to themselves”

Looking Out for Number One

- Home and Family
- Next Door Neighbors
 - Your Street
- Neighborhood / Barrio
 - Part of Town / Ward
- City - County - Region
 - State - Country

Looking Out for Number Two

- **Region - County - City**
 - Part of Town / Ward
- Neighborhood / Barrio
 - State - Country
- Home and Family
- Next Door Neighbors
 - Your Street